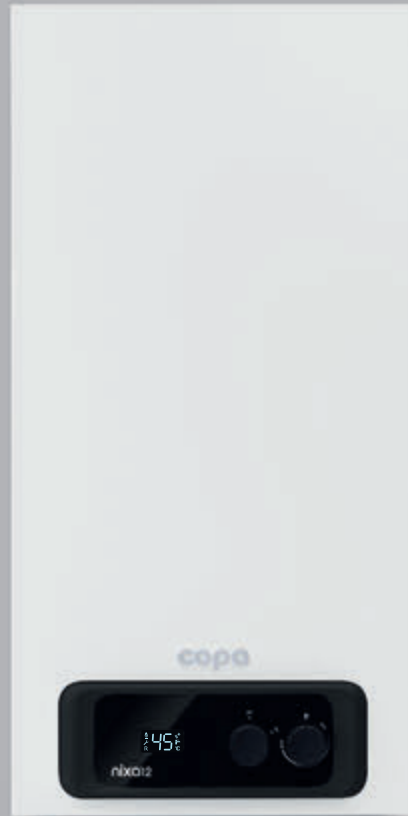


copa

hermetic  
water heater  
catalogue

Efficient and  
Comfortable  
Hot Water



Customer Service

444 2672  
copa

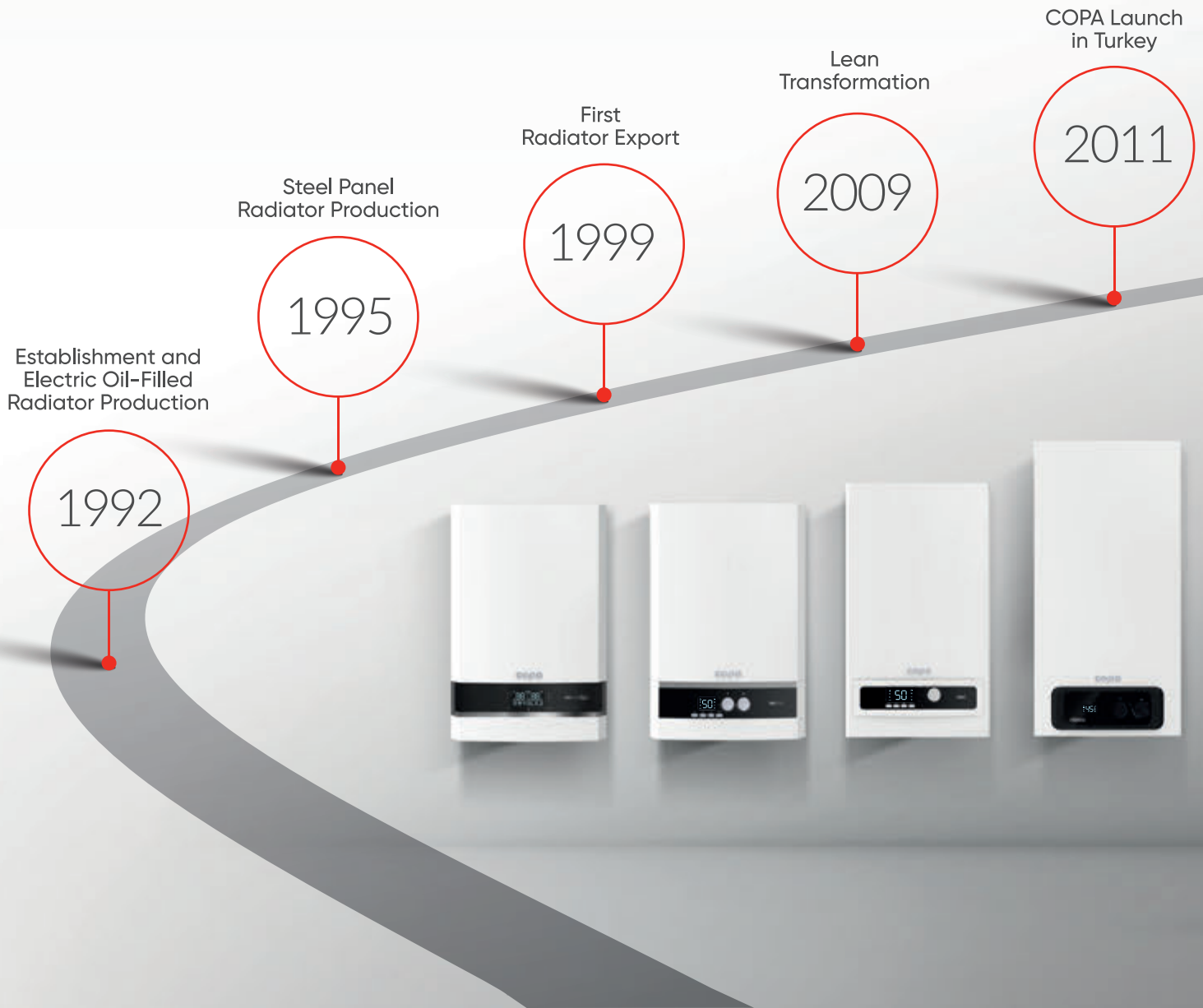
copa.com.tr/en @ /copahvac

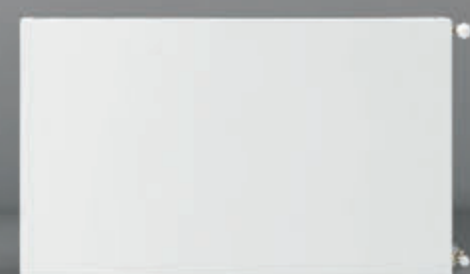
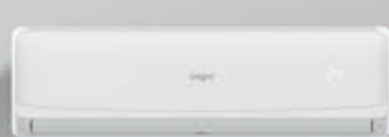
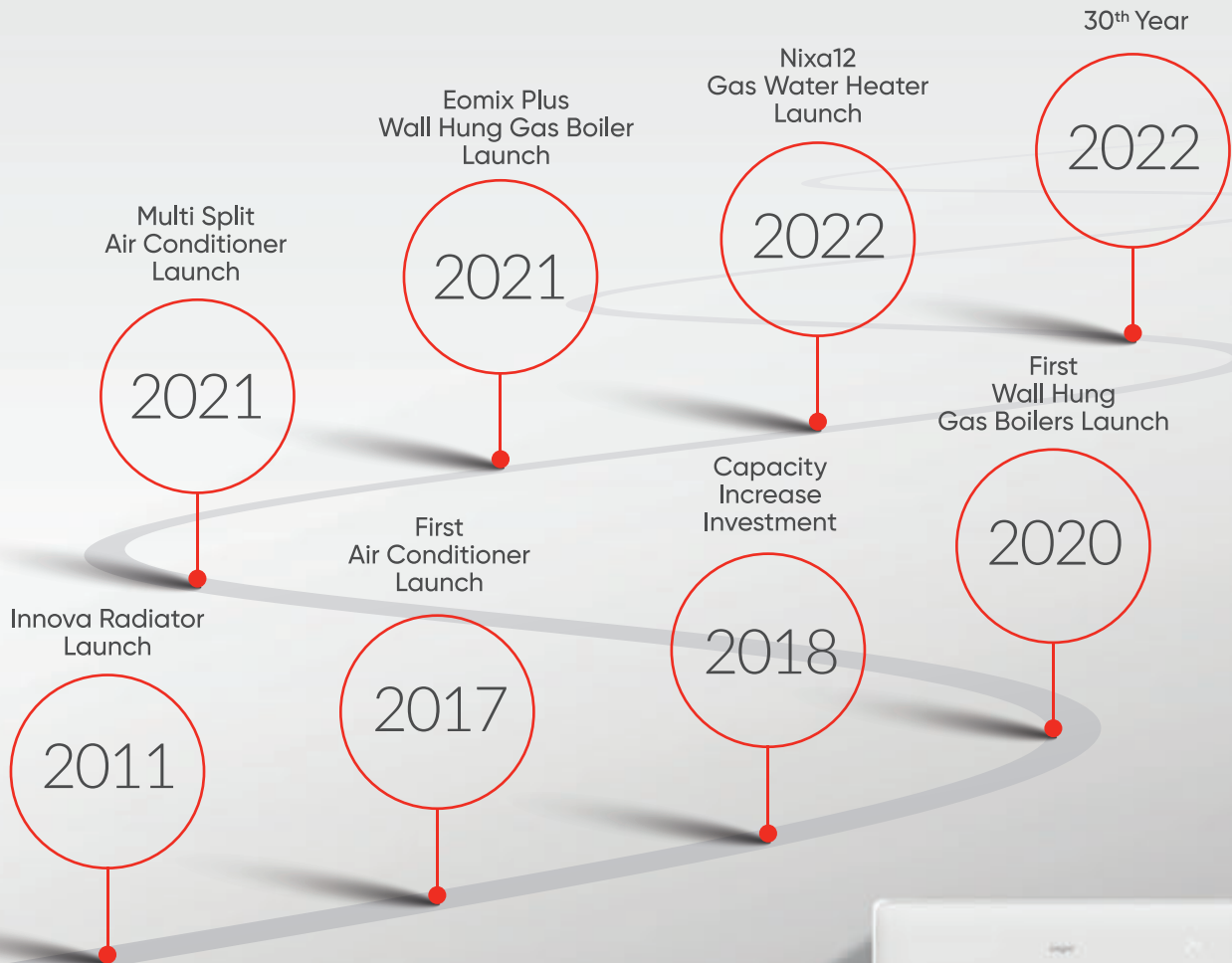
# copa

Since its establishment, COPA; which has one of the largest production capacity of steel panel radiators, operating in HVAC industry, and is the leader in export for 20 years.

COPA is a 100% Turkish capital company with its modern production facilities located in Bursa, Turkey.

COPA, operates over 40 countries across 4 continents with its wall hung gas boilers, air-conditioners, hermetic water heaters, steel panel radiators, towel radiators, radiator valves and fixing equipments.







nixar12

**Environmentally  
Friendly  
Thanks to  
Low NOx Class**

Digital LCD Display

1



Water Temperature Setting

2

ON/OFF  
NG/LPG

3

## User Friendly Control Panel

Nixa12 water heaters have control panel, digital display, and soft touch dial buttons that provide ease of use.

## Nixa12 Hermetic Water Heater Features

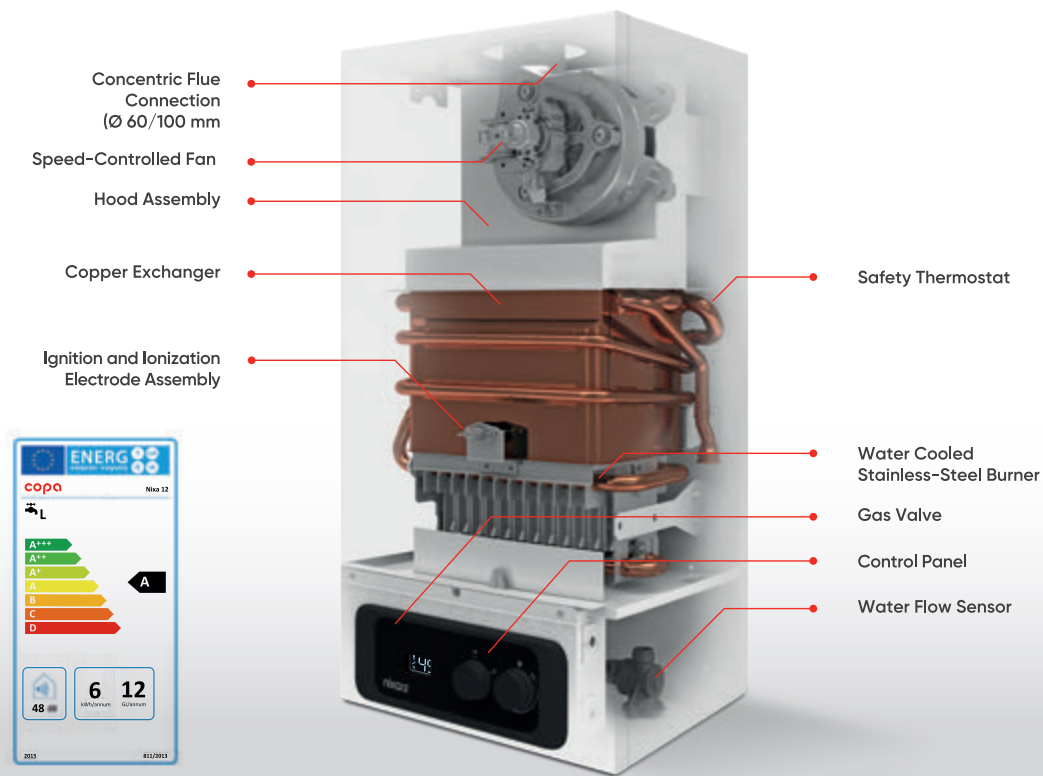
- ▶ 21 kW hot water heating power
- ▶ Comfortable hot water production capacity with 12 L/min
- ▶ A class energy efficiency
- ▶ High efficiency up to 89.2 % ( $\eta_{u-min.}$ )
- ▶ Low flue gas emission (NOx class 6) in accordance with ErP Directive thanks to water-cooled stainless steel burner
- ▶ Durable and environmentally-friendly copper exchanger
- ▶ Comfortable operation thanks to a wide modulation range from 21 kW to 10 kW
- ▶ Water temperature setting range: 35-57°C
- ▶ Precise demand detection thanks to turbine water flow sensor
- ▶ Low noise level with 48 dB
- ▶ Compact dimensions: 64.5 x 32 x 25 cm
- ▶ Low energy consumption 20-28 W
- ▶ Only 3 W electricity consumption in standby mode
- ▶ Digital LCD display:  $\pm 1^\circ\text{C}$  temperature adjustment precision
- ▶ Diagnostic system, simple fault reset
- ▶ 185-250 V AC voltage range comfortable
- ▶ Can be used with solar energy systems with storage
- ▶ Flue distance up to 4 meters horizontally or vertically

### High Comfort in Water Usage

With its higher heating capacity, high water flow rate, it has the ability to produce uninterrupted and very fast hot water and provides maximum hot water comfort.

continuous  
hot water  
comfort



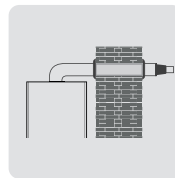


## Superior Features of Nixa12 Hermetic Water Heater



### Durable and Long-Life Copper Exchanger

Provides high performance thanks to the oxygen-free copper exchanger.



### Safe Usage

Provides safe use without using ambient air with its hermetic feature.



### Superior Safety Systems

Safe and long-term use against freezing, overheating, and voltage changes.



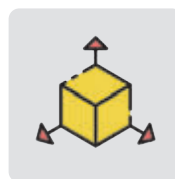
### Quick Detection

Thanks to the water flow turbine assembly and stainless filter, it is durable and detects hot water demand faster.



### Low Electricity Consumption

Fan motor consumes electricity equivalent to only one bulb ranging between 20 W and 28 W during operation.



### Aesthetic Design with Minimum Size

Provides ease of assembly with its compact dimensions. (64.5 x 32 x 25 cm) It takes up little space and provides practical use.



### Stainless-Steel Burner

It has the most suitable burner design according to ErP Class 6 directive. (<56 mg / kWh)

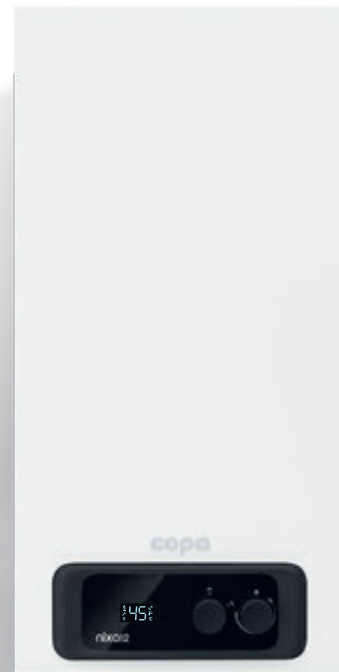


### Enhanced Electronic Card and Uninterrupted Hot Water Comfort

Despite varying conditions, it provides hot water comfort from 3 liters to 12 liters per minute.



## Continuous Hot Water Comfort with **12 L/min Capacity**



### Nixa12 Technical Specifications

Rated Heat Power	Min / Max	kW	8,5 / 21,1
Rated Heat Load	Min / Max	kW	10,0 / 23,5
Efficiency	Min / Max	%	89,2 / 88,1
NG Consumption	Min / Max	m <sup>3</sup> /h	1,03 / 2,43
NOx	Class		6
Seasonal Efficiency	Class		A
	Rating	%	77
Hot Water Load	Profile		L
Water Flow	Min / Max	L / min	3 / 12
Water Pressure	Min / Max	bar	0,5 / 8
Hot Water Temperature Setting Range	Min / Max	°C	35 / 57
Sound Level		dB	48
Electrical Protection	Class	IP	X4D
Electricity Consumption		W	20 - 30
Dimensions	W/H/D	mm	320 / 645 / 250
Weight	Net / Gross	kg	15 / 17
Flue Type			C12 - C62



All specifications on this catalogue are subjected to change without notice. COPA assumes no liability for printing errors or any mistakes. No information published in this catalogue of COPA constitutes a solicitation of offer or invitation to conclude any legal act of any kind whatsoever. It solely serves informational and descriptive purposes.

## COPA ISI SİSTEMLERİ SAN. VE TİC A.Ş.

### Headquarters

Minareliçavuş OSB Mah. Ceviz Cad. No:21 16220 Nilüfer, BURSA  
T: +90 224 324 74 00 F: +90 224 219 74 70

### Istanbul Office

Caddebostan Mah. Bağdat Caddesi No: 286 Köseoğlu Apt.  
Kat: 3 Daire: 5-6 Kadıköy, İstanbul, TÜRKİYE

### Customer Service

